

PLAN

SCALE 1:200
(A1 SIZE)

0 2 4 6 8 10

PRELIMINARY
NOT FOR CONSTRUCTION



www.westerapartners.com.au | ABN 52 097 417 975

SUNSHINE COAST
Suite 2, Norval Corporate Centre,
13 Norval Ct, Maroochydore
T 0431 803 337
E sunshinecoast@westera.com.au

BRISBANE
Level 2 Limestone,
33 Longland St, Newstead
T 02 6674 8047 | F 02 6674 8049
E brisbane@westera.com.au

GOLD COAST
Level 3
17 Welch St, Southport
T 07 5571 1599 | F 07 5571 1330
E goldcoast@westera.com.au

NORTHERN NSW
11 Saltfish Way, Kingscliff
T 02 6674 8047 | F 02 6674 8049
E nsw@westera.com.au

SURVEYOR
KENNEDY SURVEYING
PHONE (02) 6686-5700

DATUM
A.H.D.
SSM 64762
R.L. 1.267

USE FIGURED DIMENSIONS ONLY. DO NOT SCALE. IF A DISCREPANCY ARISES CHECK WITH THE PROJECT ENGINEER AND/OR SUPERVISING AUTHORITY. DO NOT WORK FROM REDUCED SCALE DRAWINGS (A1-A3 SIZE PAPER). COPYRIGHT OF ALL DRAWINGS & WORKS EXECUTED FROM THEM IS VESTED IN WESTERA PARTNERS AND USE OF THERE FORE WITHOUT PERMISSION IS STRICTLY PROHIBITED. IT IS THE BUILDERS RESPONSIBILITY TO ENSURE ALL WORKS ARE CARRIED OUT WITH DUE CARE AND DILIGENCE TO COMPLY WITH THE CONTRACT DOCUMENTS

No.	DATE	REVISIONS
B	22.07.2021	REVISED DEVELOPMENT LAYOUT ISSUED FOR APPROVAL
A	24.07.2020	ISSUED FOR D.A. APPROVAL

SHEET
PROJECT
LOCATION
CLIENT

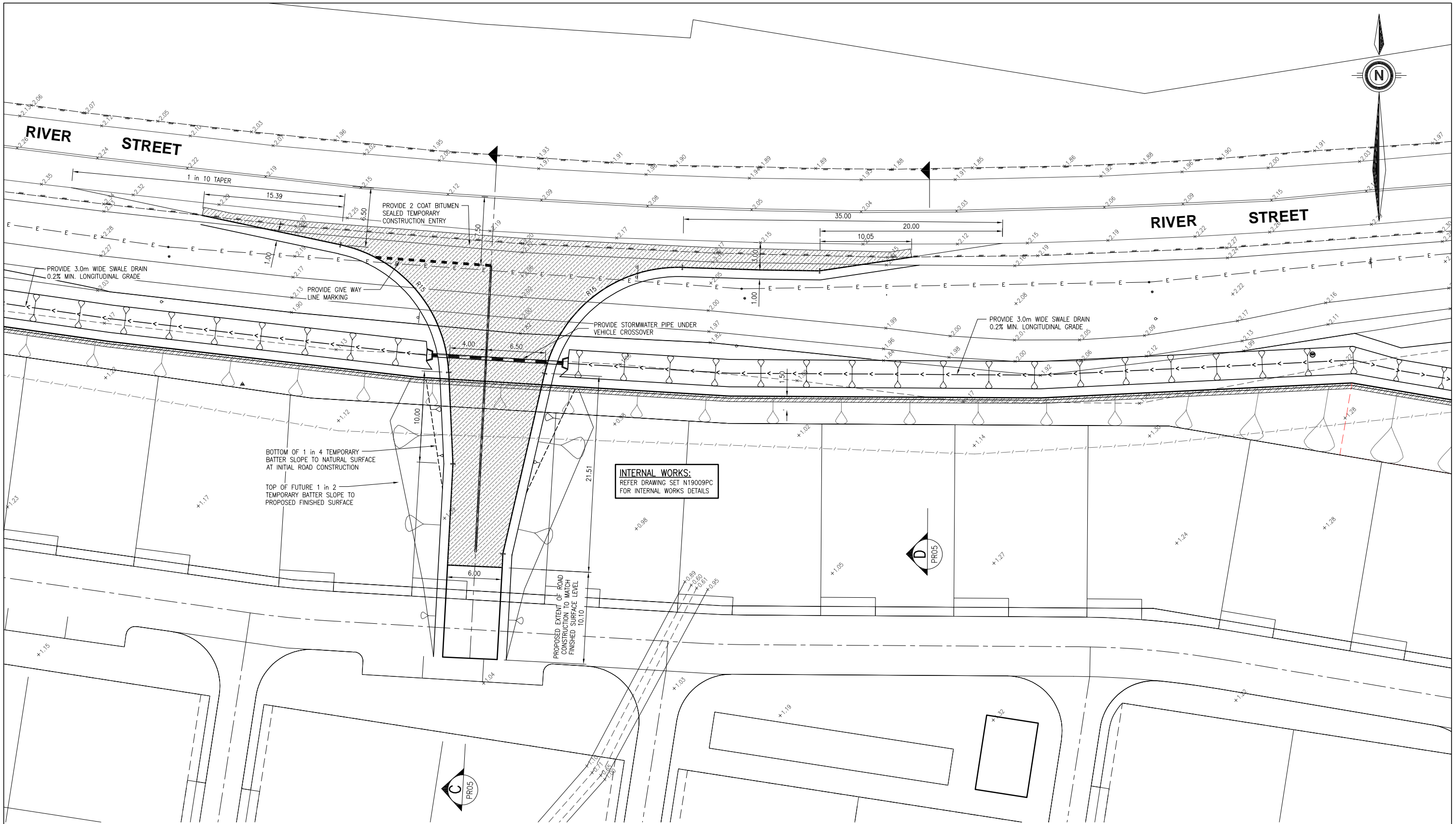
PRELIMINARY EXTERNAL ROADWORKS PLAN 1 of 5
MANUFACTURED HOME ESTATE
LOT 1 on DP124173
550-578 RIVER ST & BURNS POINT FERRY RD, WEST BALLINA
GEMLIFE PTY LTD

APPROVED

B. ARTHUR
RPEQ 4384, NER 694962
For and on behalf of
WESTERA PARTNERS PTY LTD.

DESIGNED G.J.S.
DRAWN G.G.J.
DATE DRAWN JULY 2020
FILE NAME Prelim_Ext_Rdws.dwg

SHEET NUMBER
01 of 06
REVISION B
PROJECT NUMBER
N19/009 PR



PLAN

SCALE 1:200
(A1 SIZE)

PRELIMINARY
NOT FOR CONSTRUCTION



www.westerapartners.com.au | ABN 52 097 417 975

SUNSHINE COAST
Suite 2, Norval Corporate Centre,
13 Norval Ct, Maroochydore
T 0431 603 337
E sunshincoast@westerapartners.com.au

BRISBANE
Level 2 Limestone,
33 Longland St, Newstead
T 07 3852 4333 | F 07 3852 4777
E brisbane@westerapartners.com.au

GOLD COAST
Level 3
17 Welch St, Southport
T 07 5571 1599 | F 07 5571 1330
E goldcoast@westerapartners.com.au

NORTHERN NSW
11 Sailfish Way, Kingscliff
T 02 6674 8047 | F 02 6674 8049
E nsw@westerapartners.com.au

SURVEYOR
KENNEDY SURVEYING
PHONE (02) 6686-5700

DATUM
A.H.D.
SSM 64762
R.L. 1.267

USE FIGURED DIMENSIONS ONLY. DO NOT SCALE. IF A DISCREPANCY ARISES CHECK WITH THE PROJECT ENGINEER AND/OR SUPERVISING AUTHORITY. DO NOT WORK FROM REDUCED SCALE DRAWINGS (A1-A3 SIZE PAPER). COPYRIGHT OF ALL DRAWINGS & WORKS EXECUTED FROM THEM IS VESTED IN WESTERA PARTNERS AND USE OF THERE FORE WITHOUT PERMISSION IS STRICTLY PROHIBITED. IT IS THE BUILDERS RESPONSIBILITY TO ENSURE ALL WORKS ARE CARRIED OUT WITH DUE CARE AND DILIGENCE TO COMPLY WITH THE CONTRACT DOCUMENTS

No.	DATE	REVISIONS
B	22.07.2021	REVISED DEVELOPMENT LAYOUT ISSUED FOR APPROVAL
A	24.07.2020	ISSUED FOR D.A. APPROVAL

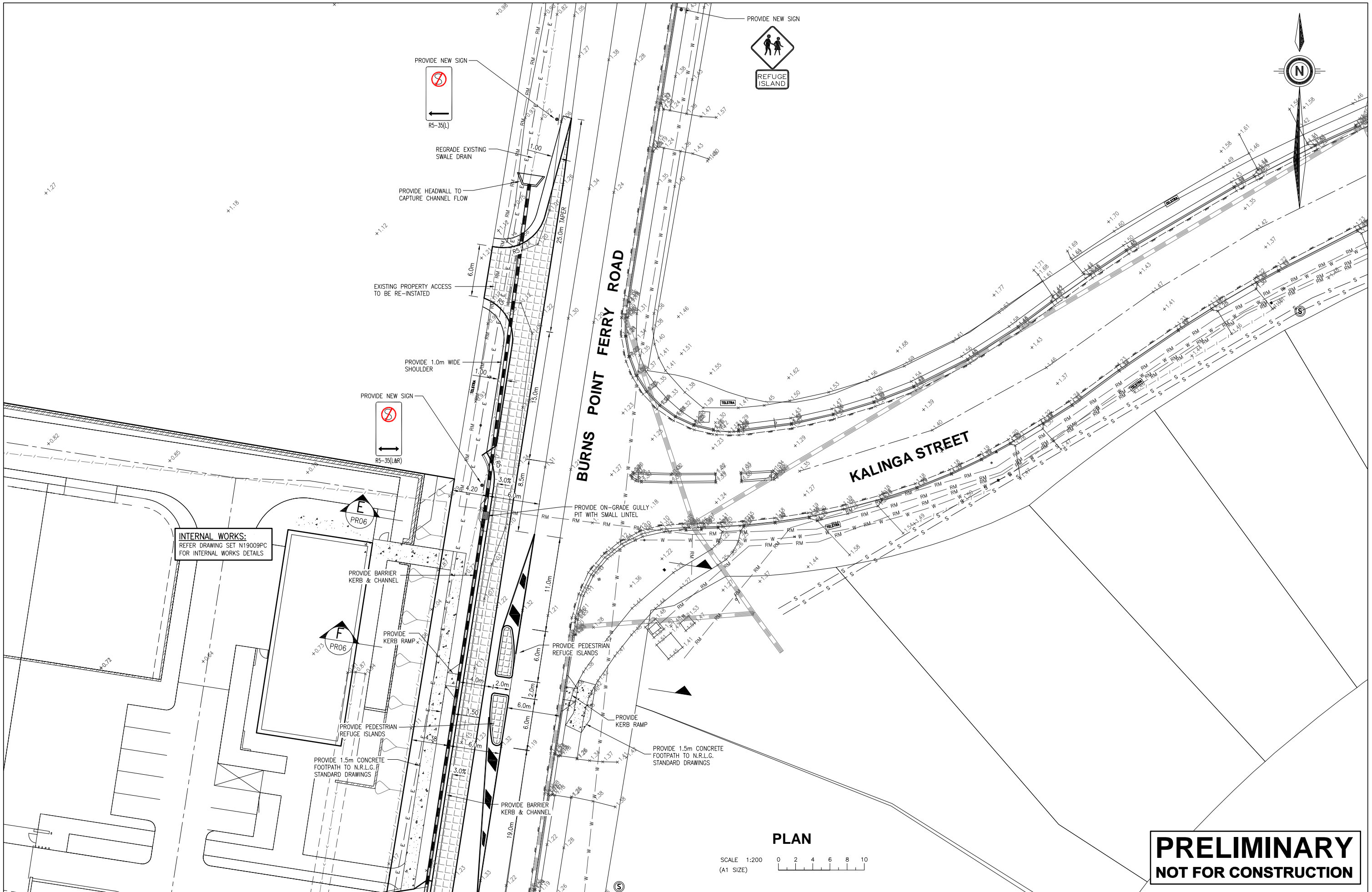
SHEET
PROJECT
LOCATION
CLIENT

PRELIMINARY EXTERNAL ROADWORKS PLAN 2 of 5
MANUFACTURED HOME ESTATE
LOT 1 on DP124173
550-578 RIVER ST & BURNS POINT FERRY RD, WEST BALLINA
GELIFE PTY LTD

APPROVED

B. ARTHUR
RPEQ 4384, NER 694962
For and on behalf of
WESTERA PARTNERS PTY LTD.

DESIGNED	G.J.S.	SHEET NUMBER	02 of 06
DRAWN	G.G.J.	REVISION	B
DATE DRAWN	JULY 2020	PROJECT NUMBER	N19/009 PR
FILE NAME	Prelim_Ext_Rdws.dwg		



PRELIMINARY
NOT FOR CONSTRUCTION

No.	DATE	REVISIONS
C	22.07.2021	REVISED DEVELOPMENT LAYOUT ISSUED FOR APPROVAL
B	31.03.2021	PEDESTRIAN REFUGE MOVED, ROAD WIDENING EXTENDED, ISSUED FOR D.A. APPROVAL
A	24.07.2020	ISSUED FOR D.A. APPROVAL

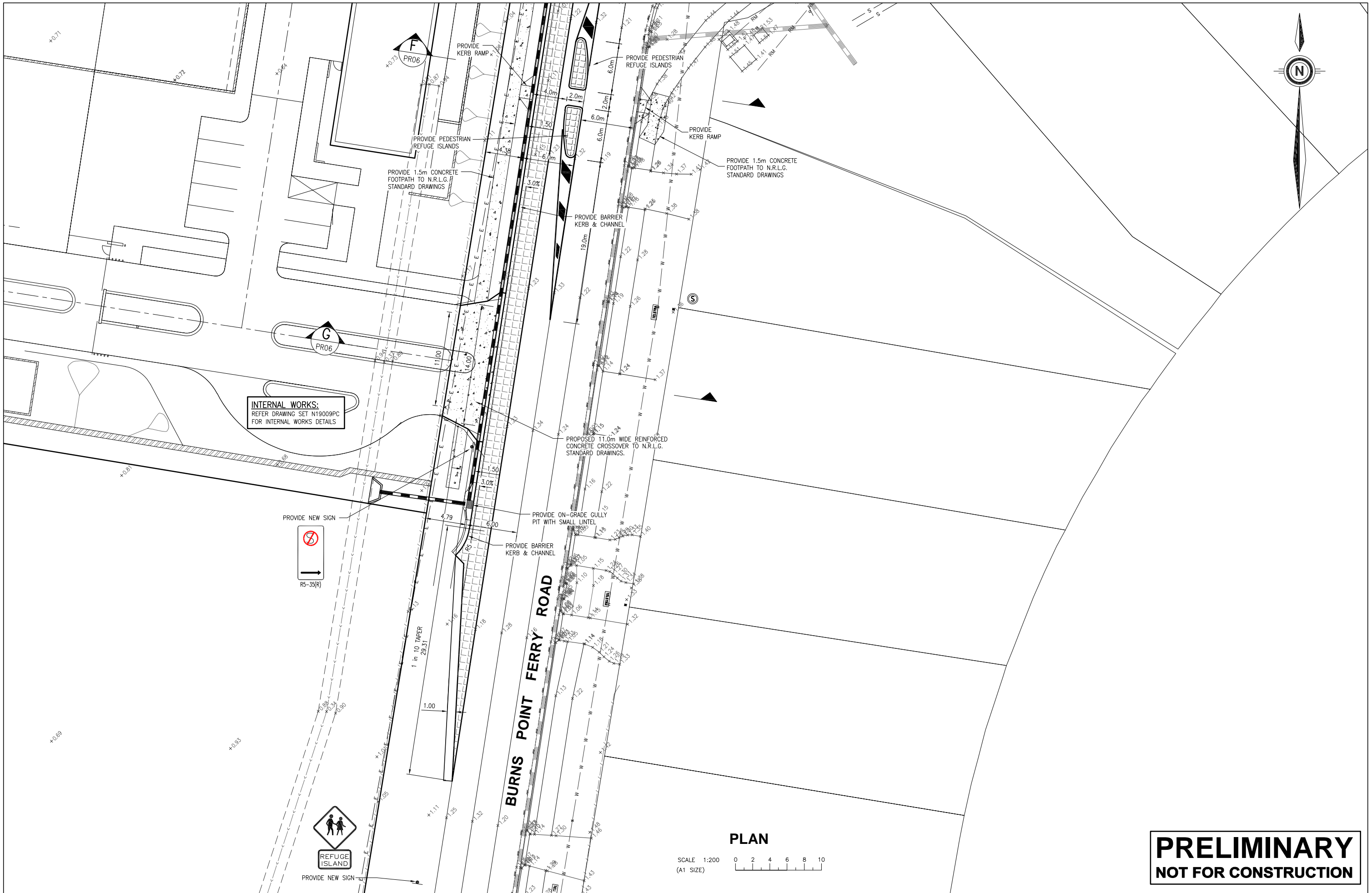
SHEET
PROJECT
LOCATION
CLIENT

PRELIMINARY EXTERNAL ROADWORKS PLAN 3 of 4
MANUFACTURED HOME ESTATE
LOT 1 on DP124173
550-578 RIVER ST & BURNS POINT FERRY RD, WEST BALLINA
GEMLIFE PTY LTD

APPROVED

B. ARTHUR
RPEQ 4384, NER 694962
For and on behalf of
WESTERA PARTNERS PTY. LTD.

DESIGNED	G.J.S.	SHEET NUMBER	03 OF 06
DRAWN	G.G.J.	REVISION	C
DATE DRAWN	JULY 2020	PROJECT NUMBER	N19/009 PR
FILE NAME	Prelim_Ext_Rdwks.dwg		



PRELIMINARY
NOT FOR CONSTRUCTION



STRUCTURAL+CIVIL+ENVIRONMENTAL ENGINEERS

SUNSHINE COAST
Suite 2, Norval Corporate Centre,
13 Norval Ct, Maroochydore
T 07 5571 1599 | F 07 5571 1330
E sunshinecoast@westerapartners.com.au

BRISBANE
Level 2 Limestone,
33 Longland St, Newstead
T 07 3852 4333 | F 07 3852 4777
E brisbane@westerapartners.com.au

GOLD COAST
Level 3
17 Welch St, Southport
T 07 5571 1599 | F 07 5571 1330
E goldcoast@westerapartners.com.au

NORTHERN NSW
11 Sailfish Way, Kingscliff
T 02 6674 8047 | F 02 6674 8049
E nsw@westerapartners.com.au

SURVEYOR
KENNEDY SURVEYING
PHONE (02) 6686-5700

DATUM
A.H.D.
SSM 64762
R.L. 1.267

No.	DATE	REVISIONS
D	22.07.2021	REVISED DEVELOPMENT LAYOUT ISSUED FOR APPROVAL
C	02.06.2021	RETAINING WALL ON SOUTHERN BOUNDARY CHANGED
B	31.03.2021	PEDESTRIAN REFUGE MOVED, ROAD WIDENING EXTENDED, ISSUED FOR D.A. APPROVAL
A	24.07.2020	ISSUED FOR D.A. APPROVAL

SHEET
PROJECT
LOCATION
CLIENT

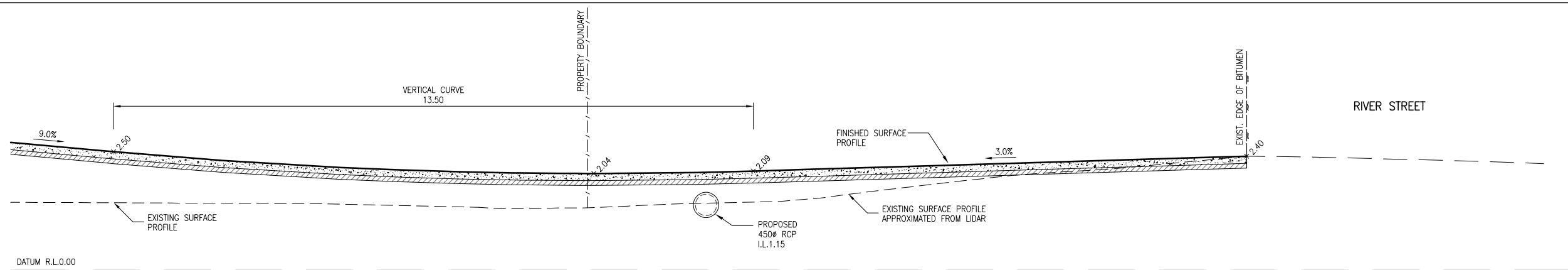
PRELIMINARY EXTERNAL ROADWORKS PLAN 4 of 4
MANUFACTURED HOME ESTATE
LOT 1 on DP124173
550-578 RIVER ST & BURNS POINT FERRY RD, WEST BALLINA
GEMLIFE PTY LTD

APPROVED

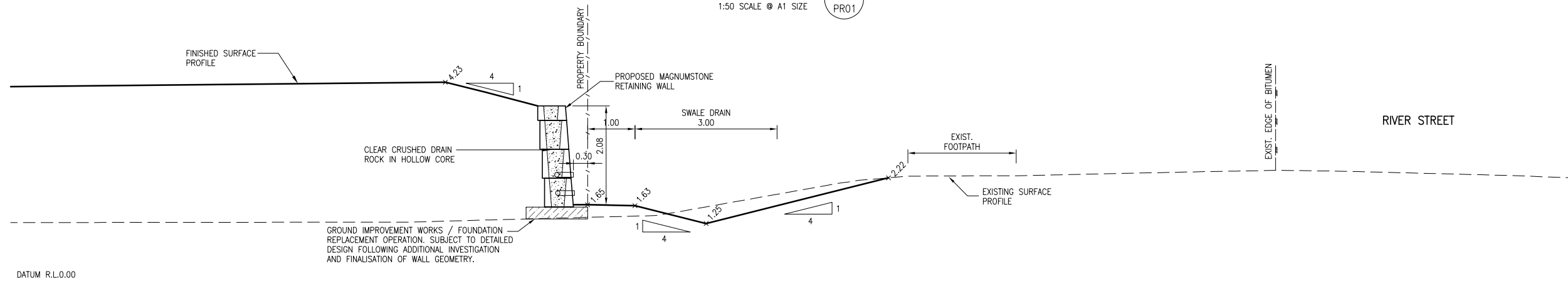


B. ARTHUR
RPEQ 4384, NER 694962
For and on behalf of
WESTERA PARTNERS PTY. LTD.

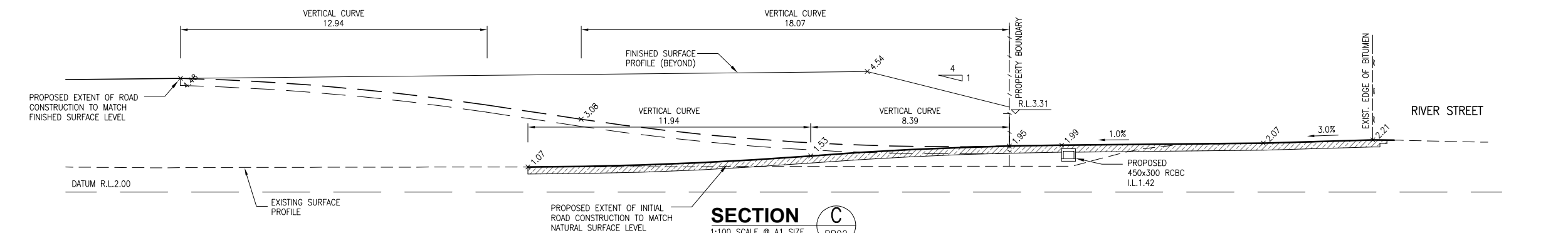
DESIGNED	G.J.S.	SHEET NUMBER	04 OF 06
DRAWN	G.G.J.	REVISION	D
DATE DRAWN	JULY 2020	PROJECT NUMBER	N19/009 PR
FILE NAME	Prelim_Ext_Rdws.dwg		



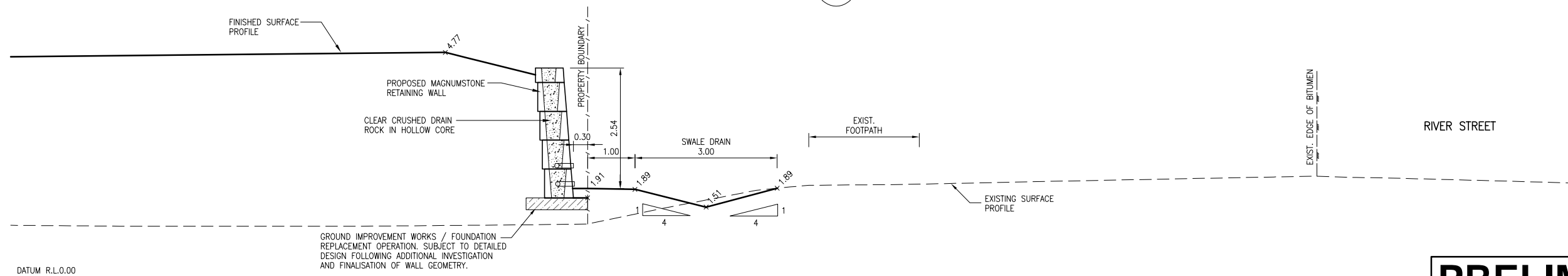
SECTION A
1:50 SCALE @ A1 SIZE
PR01



SECTION B
1:50 SCALE @ A1 SIZE
PR01



SECTION C
1:100 SCALE @ A1 SIZE
PR02



SECTION D
1:50 SCALE @ A1 SIZE
PR02

PRELIMINARY
NOT FOR CONSTRUCTION



STRUCTURAL+CIVIL+ENVIRONMENTAL ENGINEERS

www.westerapartners.com.au | ABN 52 097 417 975

SUNSHINE COAST
Suite 2, Norval Corporate Centre,
13 Norval Ct, Maroochydore
T 0431 803 337
E sunshinecoast@westerapartners.com.au

BRISBANE
Level 2 Limestone,
33 Longland St, Newstead
T 07 3852 4333 | F 07 3852 4777
E brisbane@westerapartners.com.au

GOLD COAST
Level 3
17 Welch St, Southport
T 07 5571 1599 | F 07 5571 1330
E goldcoast@westerapartners.com.au

NORTHERN NSW
11 Saltfish Way, Kingscliff
T 02 6674 8047 | F 02 6674 8049
E nsw@westerapartners.com.au

SURVEYOR
KENNEDY SURVEYING
PHONE (02) 6686-5700

DATUM
A.H.D.
SSM 64762
R.L. 1.267

No.	DATE	REVISIONS
D	22.07.2021	REVISED DEVELOPMENT LAYOUT ISSUED FOR APPROVAL
C	02.06.2021	GEOGRID REINFORCEMENT CHANGED
B	31.03.2021	RETAINING WALL TYPE CHANGED, ISSUED FOR D.A. APPROVAL
A	24.07.2020	ISSUED FOR D.A. APPROVAL

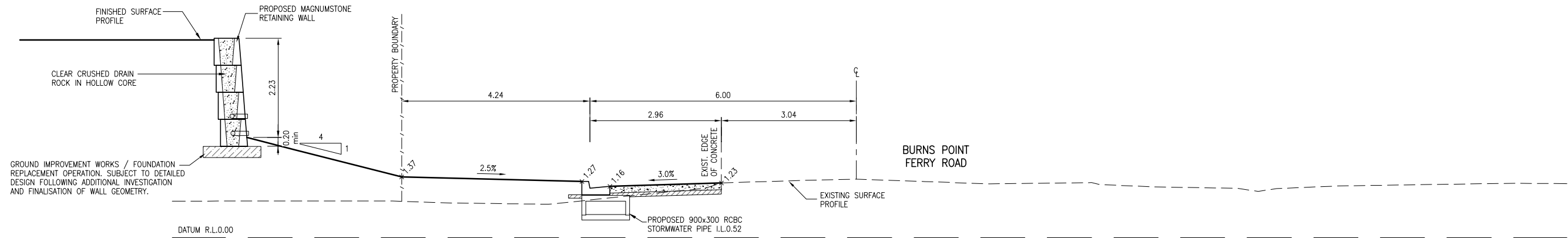
SHEET
PROJECT
LOCATION
CLIENT

PRELIMINARY EXTERNAL SECTIONS 1 of 2
MANUFACTURED HOME ESTATE
LOT 1 on DP124173
550-578 RIVER ST & BURNS POINT FERRY RD, WEST BALLINA
GEMLIFE PTY LTD

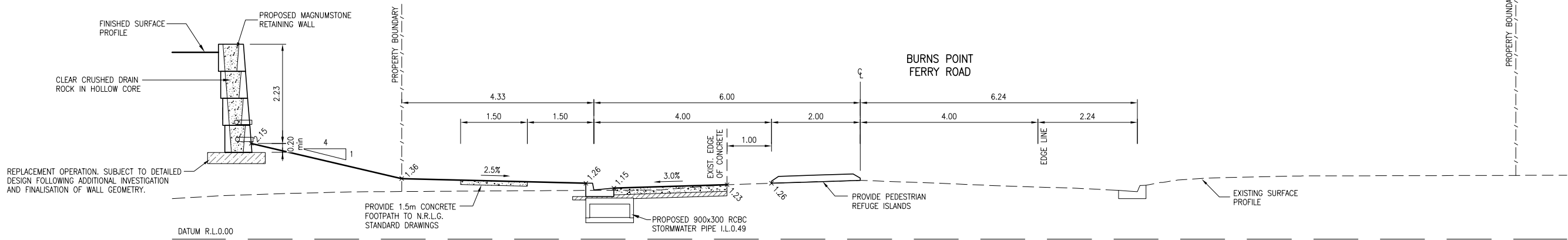
APPROVED

B. ARTHUR
RPEQ 4384, NER 694962
For and on behalf of
WESTERA PARTNERS PTY LTD.

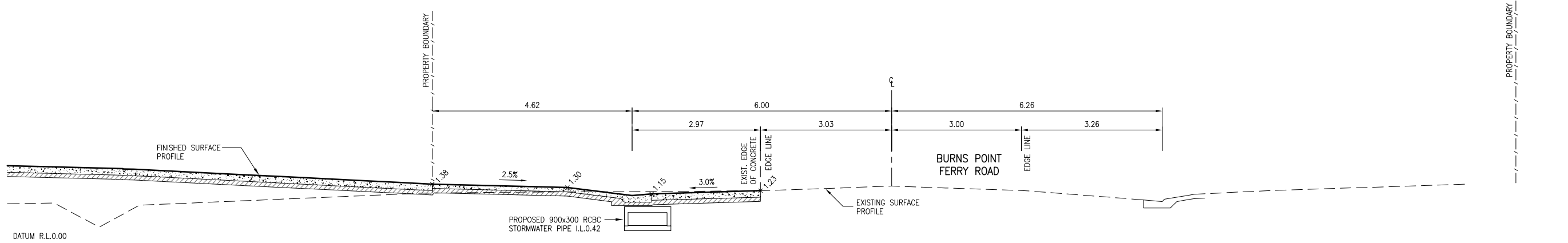
DESIGNED G.J.S.	SHEET NUMBER 05 of 06
DRAWN G.G.J.	REVISION D
DATE DRAWN JULY 2020	PROJECT NUMBER N19/009 PR
FILE NAME Pre_Ext_Sect.dwg	



SECTION E
1:50 SCALE @ A1 SIZE
PR03



SECTION F
1:50 SCALE @ A1 SIZE
PR03



SECTION G
1:50 SCALE @ A1 SIZE
PR04

PRELIMINARY
NOT FOR CONSTRUCTION



www.westerapartners.com.au | ABN 52 097 417 975

SUNSHINE COAST
Suite 2, Norval Corporate Centre,
13 Norval Ct, Maroochydore
T 0431 803 337
E sunshinecoast@westera.com.au

BRISBANE
Level 2 Limestone,
33 Longland St, Newstead
T 07 3852 4333 | F 07 3852 4777
E brisbane@westera.com.au

GOLD COAST
Level 3
17 Welch St, Southport
T 07 5571 1599 | F 07 5571 1330
E goldcoast@westera.com.au

NORTHERN NSW
11 Salfrish Way, Kingscliff
T 02 6674 8047 | F 02 6674 8049
E nsw@westera.com.au

SURVEYOR
KENNEDY SURVEYING
PHONE (02) 6686-5700

DATUM
A.H.D.
SSM 64762
R.L. 1.267

USE FIGURED DIMENSIONS ONLY. DO NOT SCALE. IF A DISCREPANCY ARISES CHECK WITH THE PROJECT ENGINEER AND/OR SUPERVISING AUTHORITY. DO NOT WORK FROM REDUCED SCALE DRAWINGS (A1-A3 SIZE PAPER). COPYRIGHT OF ALL DRAWINGS & WORKS EXECUTED FROM THEM IS VESTED IN WESTERA PARTNERS AND USE OF THERE FORE WITHOUT PERMISSION IS STRICTLY PROHIBITED. IT IS THE BUILDERS RESPONSIBILITY TO ENSURE ALL WORKS ARE CARRIED OUT WITH DUE CARE AND DILIGENCE TO COMPLY WITH THE CONTRACT DOCUMENTS

No.	DATE	REVISIONS
D	22.07.2021	REVISED DEVELOPMENT LAYOUT ISSUED FOR APPROVAL
C	02.06.2021	GEOGRID REINFORCEMENT CHANGED
B	31.03.2021	PEDESTRIAN REFUGE MOVED, ROAD WIDENING EXTENDED, ISSUED FOR D.A. APPROVAL
A	24.07.2020	ISSUED FOR D.A. APPROVAL

SHEET
PROJECT
LOCATION
CLIENT

PRELIMINARY EXTERNAL SECTIONS 2 of 2
MANUFACTURED HOME ESTATE
LOT 1 on DP124173
550-578 RIVER ST & BURNS POINT FERRY RD, WEST BALLINA
GEMLIFE PTY LTD

APPROVED

B. ARTHUR
RPEQ 4384, NER 694962
For and on behalf of
WESTERA PARTNERS PTY LTD.

DESIGNED G.J.S.	SHEET NUMBER 06 of 06
DRAWN G.G.J.	REVISION D
DATE DRAWN JULY 2020	PROJECT NUMBER N19/009 PR
FILE NAME Pre_Ext_Sect.dwg	